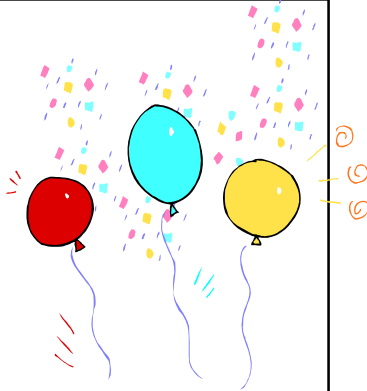


DATA TEC POWERSOFTMD

Major Scheduling
Enhancement:
*Bye, Bye, BROWSE
MODE....*



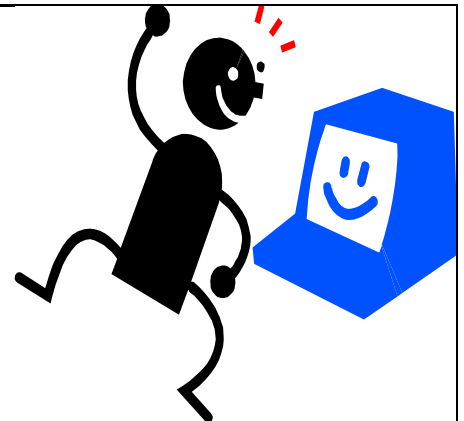
Volume 2011, Issue 2
August 2011

See why you should
sign up for elec-
tronic claims today;
details inside.....

A New Scheduling option **eliminates
Browse Mode!**

Multiple people can create and update ap-
pointments on the same day at the same
time

Call us for this update: (636) 256-7401



Free Webinar

When: August 31, 12:30PM
Central Daylight Time; Please
reserve your spot as soon as
possible!

What: Advanced Scheduling
& New EMR Features

To register: visit our website

www.PowerSoftMD.com then, on the middle of the home
page, click on [Webinar Registration Form](#) link. Follow the
instructions on the Registration form.



Backups Are Essential



One of the most important tasks in your office is getting full and complete backups, as well as storing them off-site. We recommend, at minimum, a 3-step approach:

- 1) Nightly backup to an external drive, rotating through at least 5 different devices (one for each day of the week) and take them *out of the office*.
- 2) Letting your **PowerSoftMD** daily Cross-Network backups run to completion on different work stations each day.
- 3) Use an online back up service, like MozyPro, as an extra safety net.

For the external drive backup, we recommend using portable hard drives such as the Iomega eGo Portable Hard Drive, USB 3.0 version. They are inexpensive, fast, and very rugged. If you do use portable drives, consider using a password on the backups (in case you lose them). Learn More Backup Strategies at:

www.powersoftmd.com/technote/BackupStrategies.pdf

Meaningful Use Certification

We have been working hard on completing program enhancements to apply for Meaningful Use Certification. We are planning on submitting our software for certification soon. Between the certifying bodies reviewing the software, giving us feedback, and making potential changes for re-submission, the process can take some time.

As soon as PowerSoftMD is certified we will make the upgrade purchase available. Here is an update on some of the progress of the new features our certified system will include:

eScripts—Completed
Growth Charts—Completed
Lab Interface—Completed
Expanded Problems List—Completed
Expanded Demographics—Completed
CPOE Orders System—In Progress

Did you know....? PowerSoftMD has eScripts, which is required for certification. If you're not signed up yet, you should be!

Call for more information: (636) 256-7401



Periodic Maintenance

Always complete a successful backup first, and be sure no one else is using PowerSoftMD during the tasks below:

1) From the Primary Menu, in the lower left-hand corner, select the “ReIndex” button. This will re-alphabetize your patient index and rebuild the internal Family Tree pointers. There should be NO ONE else in the software while you run this.

2) From the Utility Menu, select the “Clean Up Ins History” option. The password is “Secret”. This

attempts to correct patient Insurance History window entries that weren’t updated due to mistakes made during insurance payment posting, using the dates of service.

3) Run a Windows Defrag on your main computer and each work station. In fact, there is a free program we recommend from www.auslogics.com

4) Clean up temporary Windows & Internet work files; check out www.piriform.com/ccleaner



Electronic Claims with GatewayEDI

Now is the time to sign up! If you don’t use e-claims already, you can.....

- Pre-Edit claims for Accuracy **BEFORE** sending them
- **Get PAID FASTER!**
- Eliminate time spent mailing and printing claims

Even If you already use e-claims, did you know.....

-you can also do secondary claims?
-and pre-authorizations?

Call us today to find out more! Phone (636) 256-7401



“Help Us Help You”



Our best new ideas come from **you!** Please give us your ideas by using the Light Bulb Enhancements Icon or button from the Primary Menu. Then use the Yellow “Request and Enhancement” button.

A very heart felt and sincere **Thank You** from all of us here at **PowerSoftMD** for helping us make our software better all the time!

Sincerely, **Peter Goodall & the entire PowerSoftMD staff**

ATTENTION: Do you take credit cards...or would you like to?

We do accept credit cards through X-Charge!

Some of the many benefits:

- Our software will allow your patients to make partial payments, based on what’s available in their account.
- No phone line required!
- Intergrated into your PowerSoftMD
- One of the Lowest credit card rates in the nation!

Recent Enhancements

1. There is a new EMR Report called “Problems/Diagnosis Search List” which allows you to search the “Medical Problems” for patients within any visit date range
2. On the SOAP note, you can bring up the “Medical Problems” screen when you click the “Medical Problems” button on the left column.
3. On the Primary Menu, you can now look up diagnosis codes with the “Diagnosis” button in the lower-left of the screen.
4. On the SOAP note, there is an improved Medical Problems List
5. Updated eSuperbill screen, allowing you to see the entire diagnosis description
6. Escripts now captures the Pharmacy information used and the Additional Drugs Details
7. On the SOAP note, you can now set text that will appear automatically when you click Abnormal or Normal for a certain Exam item
8. On the SOAP note, you can customize the order in which the fields of the SOAP note print, as well as add your own letterhead.
9. From the Primary Menu, you can use the new drop-down arrow next to the Patient Icon to go directly to their Insurance Screens or General Screen
10. The Vitals Signs screen has a “Report” button to generate a report over any range of dates on any or all Vital Sign fields.
11. On the schedule, if you click on a patient’s name, there will be a new “Held Pay” button that brings up the Held Payments window for that particular patient.
12. The patient’s “Export—Excel Format” option now includes the patient’s email address.
13. The “Transaction Ledger Search” report generates a file of patients which can be used by the “Patient Search By Criteria” report. This allows you to find patients based on their ledger contents, such as CPT codes, Diagnosis codes, payment information, etc. This will also allow you to do the Mail Merge and Patient Export.